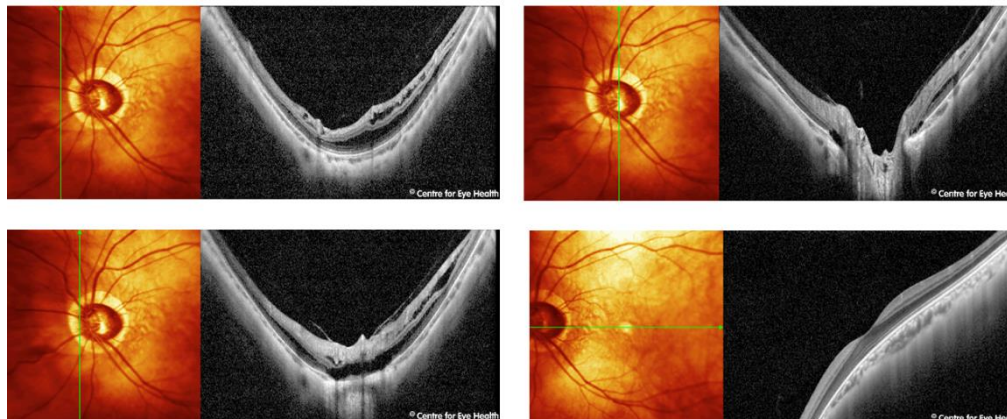
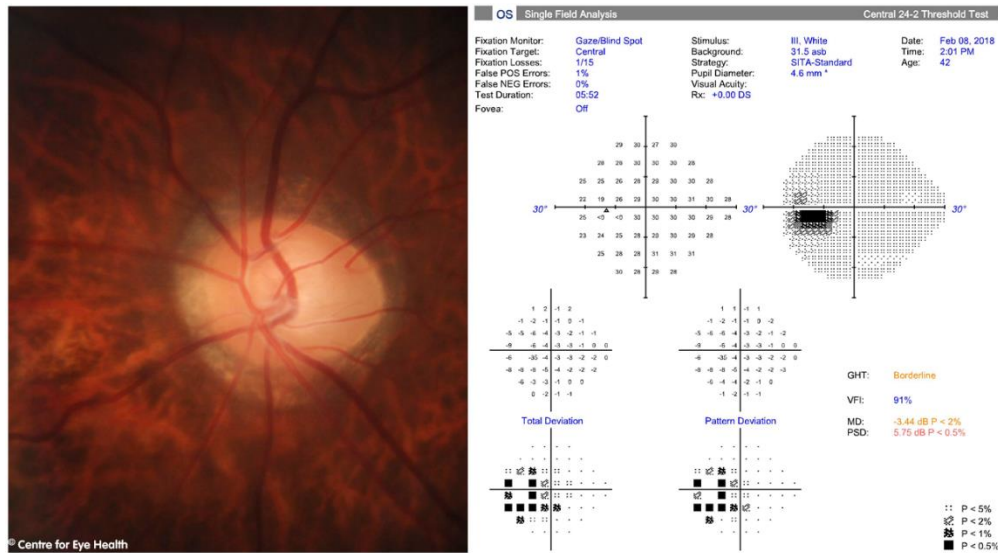


CFEH Facebook Case #95

A 42 year old Asian male presented for a glaucoma assessment. He reports having had LASIK 18 years previously to treat a pre-operative script of -9.00 DS (OU). Both eyes had a similar appearance, field loss and OCT results. Does this patient have glaucoma?



Proudly brought to you by

LEARNING FOR VISION



Centre for Eye Health



Optometry

NEW SOUTH WALES

AUSTRALIAN CAPITAL TERRITORY

ANSWER

The disc photos show horizontally oval, large sized discs with large cups and extensive circumferential peripapillary atrophy. There were no signs of Drance haemorrhage or notching.

The OCT results reveal signs of pathological myopia including posterior staphyloma, localised peripapillary detachment, peripapillary schisis, and paravascular cysts. The visual field results show enlarged blind spots with deep depressions secondary to these pathological changes.

To summarise, there is no convincing evidence of glaucoma with the field defect consistent with pathological myopia