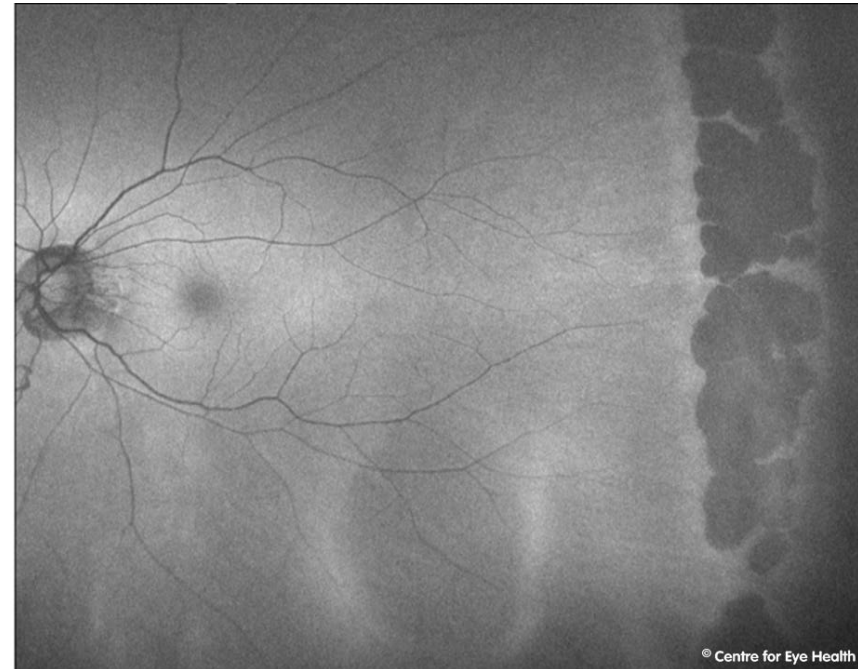
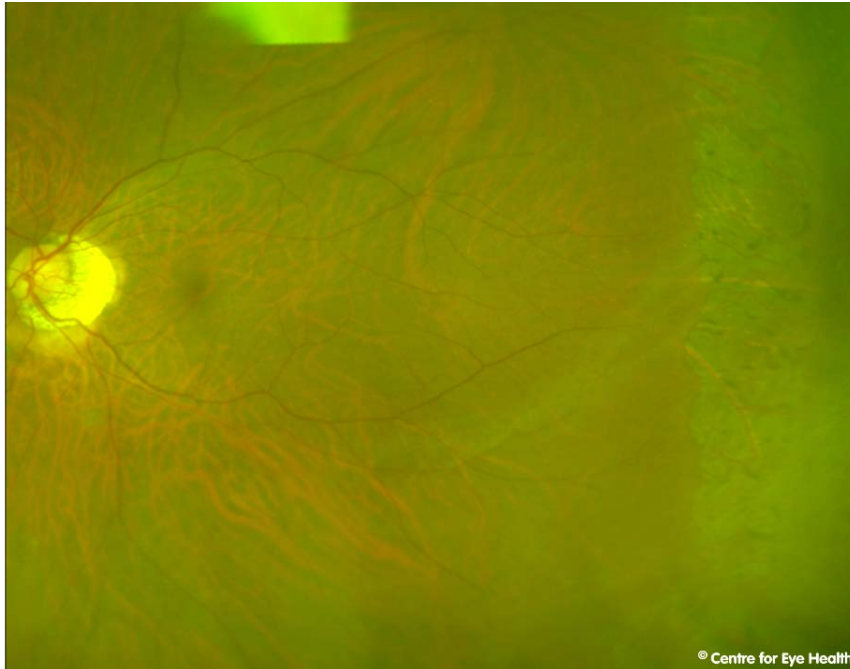




CFEH Facebook Case #92

A 65 year old highly myopic Asian male presented for a peripheral retinal examination. Below are the Optomap and Fundus Autofluorescence images for the left eye (both eyes had a similar appearance). What is the nature of the peripheral changes seen?



Proudly brought to you by

LEARNING FOR VISION



Centre for Eye Health



Optometry
NEW SOUTH WALES
AUSTRALIAN CAPITAL TERRITORY

ANSWER

Confluent paving-stone degeneration.

Paving-stone degeneration is a term referring to areas of chorio-retinal atrophy with discrete margins, located between the ora serrata and the equator. It is characterised by an atrophy of the outer retinal layers and adherence of the inner retinal layers to Bruch's membrane. Lesions are typically yellow-white in colour due to choroidal atrophy (causes the sclera to be partially visible). Paving-stone degeneration can become confluent over time, as in the case presented here. The discrete lesions can still be appreciated on the fundus autofluorescence image, but are more difficult to discern on the Optomap image.

A different presentation of extensive paving-stone degeneration is below:



Paving-stone degeneration is a benign condition, not associated with any known complications.