



CFEH Facebook Case #82

A 53 year old asymptomatic Caucasian presented for examination. What is the likely nature of the lesion in the supero-temporal retina and what would you expect to see on an OCT line scan through this lesion?



© Centre for Eye Health

Proudly brought to you by

LEARNING  **VISION**



Centre for Eye Health



Optometry
NEW SOUTH WALES
AUSTRALIAN CAPITAL TERRITORY

Proudly brought to you by

LEARNING FOR VISION



Centre for Eye Health

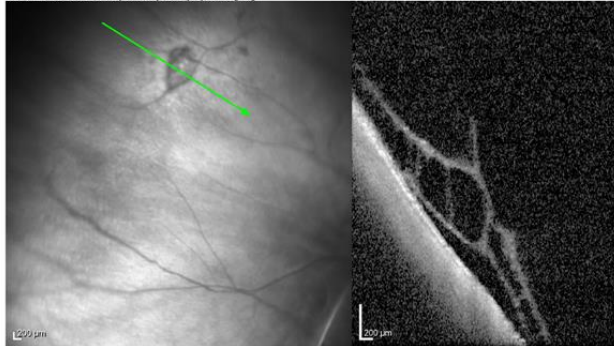


Optometry
NEW SOUTH WALES
AUSTRALIAN CAPITAL TERRITORY

ANSWER

It is an area of lattice degeneration with marked vitreoretinal traction. There is an associated retinoschisis and tractional detachment. The true nature of this lesion can only be appreciated with OCT imaging:

IR 30° ART + OCT 15.0° (3.9 mm) ART (11) Q: 22 (HS)



This patient was referred promptly to an ophthalmologist.

A useful chairside reference on peripheral retinal lesions is available to download at:

https://centreforeyehealth.com.au/wp-content/uploads/2016/09/chairside_reference_peripheral-retina.pdf

IR 30° ART + OCT 15.0° (3.9 mm) ART (41) Q: 27 (HS)

