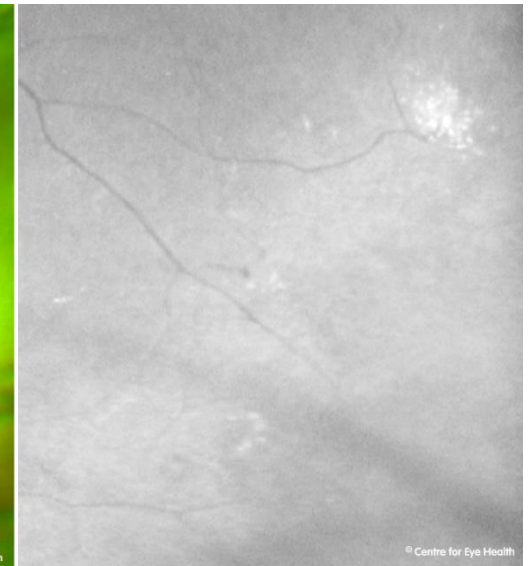
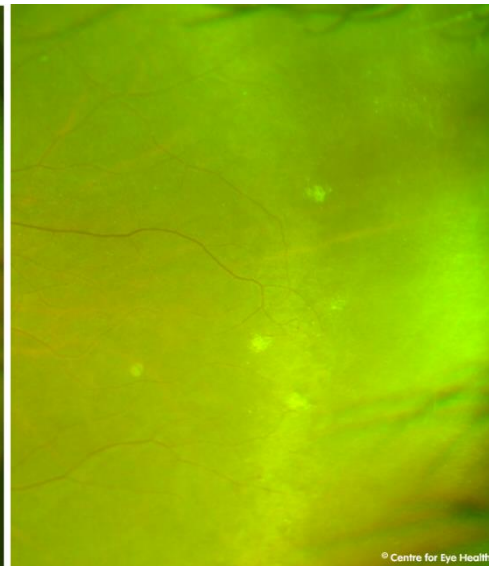
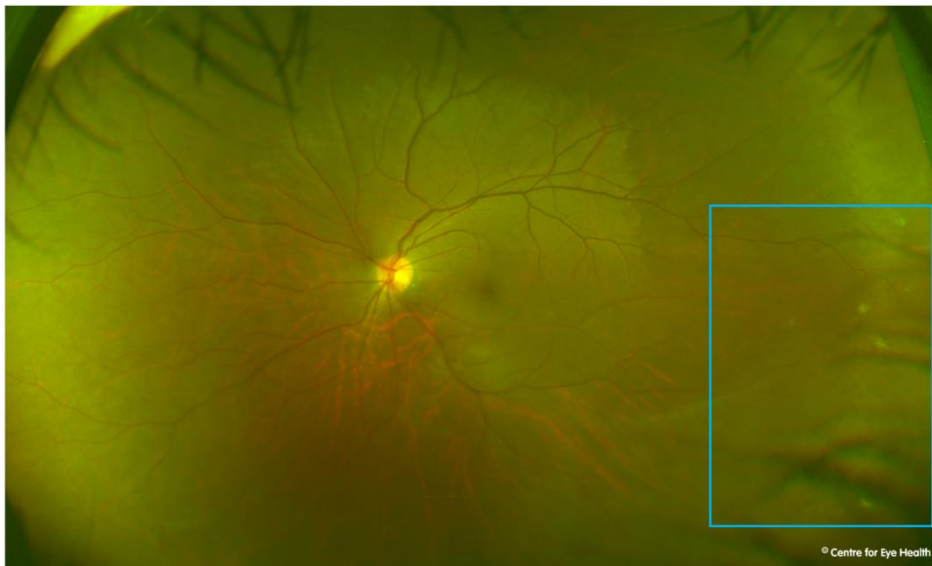




## CFEH Facebook Case #126

A 29 year old female was referred for a peripheral retinal exam. Her prescription is -11.00DS in the right eye and -10.50DS in the left. She is asymptomatic and reports good general health. The lesions seen peripherally were present in both eyes however only the left eye is shown here. What are these peripheral lesions and what has caused them to form?



In conjunction with



# ANSWER

The white lesions in the peripheral retina are focal clumps of exudative material. Looking at the magnified red-free image given, there are also microaneurysms and teleangiectatic vessels present in the peripheral retina. These retinal changes most likely reflect peripheral retinal non-perfusion and are likely related to the patient's high myopia. The differential diagnosis in this patient would be a mild form of familial exudative vitreoretinopathy.