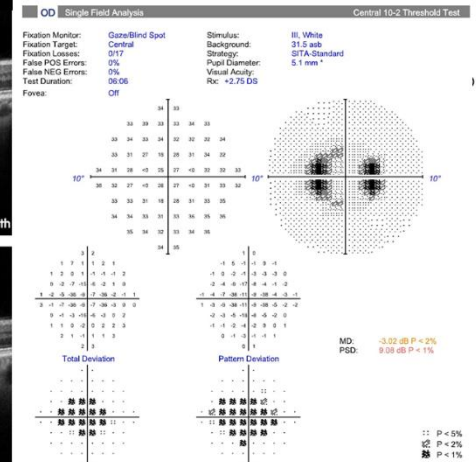
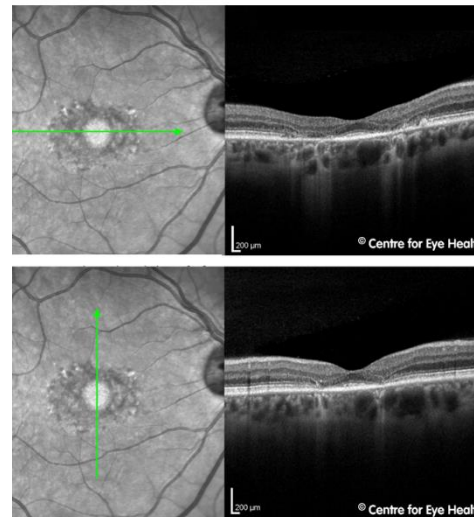
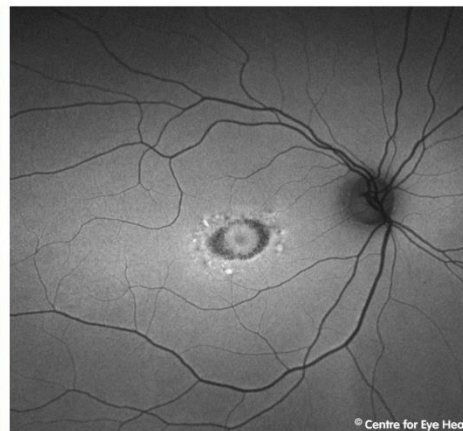


## CFEH Facebook Case #119

A 42 year old female presented with increased blur in her right eye. She takes Avapro and Plaquenil (she has taken this daily for 3 years). Visual acuity was 6/6 in each eye but contrast sensitivity is reduced in both eyes at 1.32 log units in the right and 1.44 log units in the left eye (MARS test – normal range 1.72-1.92 log units). Both eyes have a similar appearance, however the changes are more pronounced in the right eye (shown below). What has caused this patient's symptoms?



# ANSWER

This patient has bilateral central bull's eye patterns of atrophy, mainly affecting the RPE and outer retinal layers, with associated VF loss (10-2 test grid). These changes correspond to a ring of hypofluorescence and surrounding mottling of mostly hyperfluorescence. These findings are consistent with a diagnosis of Hydroxychloroquine retinopathy.

The risk factors for toxic retinopathy include: high dosage (>5.0mg/kg real weight), long duration of use (>5 years), renal disease, use of tamoxifen and concomitant macula disease (Marmor et. al. Recommendations on Screening for Chloroquine and Hydroxychloroquine Retinopathy 2016 Revision. Ophthalmol 2016; 123:1386-1394).